

# DELIVERING CERTAINTY

## QINGDAO MCDERMOTT WUCHUAN



Qingdao McDermott Wuchuan (QMW) is a joint venture between McDermott and CSSC. It is a world-class fabrication yard for topsides, modules and subsea structures, supported by McDermott's global systems and procedures. The fully-enclosed module assembly shop operates 24/7 for on-time schedule, delivering certainty to your projects through rain or shine.

### Certifications

ISO 9001, ISO 29001, ISO 14001, ISO 45001, EN 1090, ISO 3834, CSA W47.1

### Piping Shop

- Physically isolated carbon and exotic steel shop to prevent contamination
- Equipped with pipe cutting, beveling, rotator, manipulator, drilling and welding equipment
- The shops are serviced with various overhead and A-frame cranes
- Four bays NDT bunker

### Structure Shop

- Outfitted with state-of-the-art and computer controlled equipment
- Serviced by various overhead and A-frame cranes
- Material feed and off-cut removal handled by a custom designed heavy duty conveyor system

### Blasting & Painting Shop

- Auto-blast/Primer removes mill scale & rust and enhances "build clean" concept
- Equipped with dust collector/vacuum recovery/dehumidifier/compressor air dry system
- VOC emission treatment as well as other gases/particles
- A separate TSA/TSZA shop

### Module Shop

- Fully enclosed assembly shop enhances safety, quality and delivery certainty
- Ability to work 24/7 through rain or shine
- 200m(L) x 120m(W) x 42m(H), 4 bays
- Served by 14 overhead cranes, including two sets of 300MT capacity cranes

### Warehouse

- 7,500 m² covered warehouse including 1,000 m² climate controlled areas for critical equipment
- Goods receiving and issuing are tracked by an online computerized material control system
- Materials received are segregated by type and project

### Open Erection Area

- 210,000 m² assembly area with 150MT/m² bearing capacity
- 60,000 m² (new developed) assembly area
- 155,000 m² reserved area

### QMW Quayside Particular

**Length:** 376m

**Skidway:** 50,000 ton capacity, 297m Length x 34m Width

**Water Depth:** 11m at LAT

**Pier:** 2 off (58m and 42m length)

**Navigation channel:** 3.5 km from the yard

### Shipyard Dry Dock Particular (Top Three)

**First:** 530m x 125m x 13.1m

**Second:** 480m x 115m x 13.6m

**Third:** 480m x 96m x 14.1m

### Overall Yard Particular

#### (Combined with Shareholder's shipyard)

**Total Yard Area:** 4,500,000m² [106 acres] [43 ha]

**Total Quayside Length:** 6,000m

**Total B&P Shops:** 12 Blasting shops & 23 Painting shops

### OnshoreMAX® Advantages

- One-stop solution from fabrication to integration/commissioning
- Maximize integration/commissioning scope onshore
- Earlier commence on PCC and onshore/nearshore operation to optimize schedule
- Lower operational risk with land-based topside load-out and integration
- Early identification and resolving PL issues during onshore/near-shore commissioning
- Commissioning ability, providing certainty to offshore commissioning and early introduction of product

# PROJECT EXPERIENCE

## Marjan Project

**Client:** Saudi Aramco

**EPC:** McDermott

**Project type:** Integrated Offshore Topside

**Duration:** 29 Months

**Total Weight:** 22,000 MT

**Scope of Work:** Fabrication engineering, construction, PFP, insulation, HVAC, architecture, mechanical completion, pre-commissioning & commissioning support, weighing and load-out

## Scarborough Project

**Client:** Woodside

**EPC:** McDermott

**Project type:** Floating Production Unit (FPU) Topside

**Duration:** 29 Months

**Total Weight:** 32,500 MT

**Scope of Work:** Fabrication engineering, procurement of bulk materials, construction, PFP, insulation, HVAC, architecture, mechanical completion, pre-commissioning & commissioning support, weighing and load-out

## Arctic LNG2

**Client:** Novatek/Total

**EPC:** Technip

**Project type:** LNG Near Shore Module

**Duration:** 29 Months

**Total Weight:** 32,000 MT

**Scope of Work:** Fabrication engineering, procurement of bulk material, construction, PFP, insulation, architecture, mechanical completion & pre-commissioning, weighing and load out

## MEG Project

**Client:** ExxonMobil/SABIC

**EPC:** CMI (CTCI McDermott Integrated)

**Project type:** Petrochemical Modules

**Duration:** 25 Months

**Total Weight:** 33,400 MT

**Scope of Work:** Fabrication engineering, procurement of bulk material, construction, PFP, insulation, mechanical completion & support of commissioning, weighing and load-out

## YAMAL Project

**Client:** Novatek/Total

**EPC:** Technip/JGC/Chiyoda

**Project type:** LNG

**Duration:** 16 Months

**Total Weight:** 12,000 MT

**Scope of Work:** Fabrication engineering, procurement of painting, structure steel and E&I bulk material, construction, PFP, insulation, mechanical completion & pre-commissioning, load-out

## JORD Project

**Client:** PEMEX

**EPC:** Jord Oil & Gas

**Project type:** Offshore Module

**Duration:** 8 Months

**Total Weight:** 2,000 MT

**Scope of Work:** Fabrication engineering, procurement of painting, structure steel, piping and E&I bulk material, construction of process modules, mechanical completion & pre-commissioning, transportation to integration yard

## Cameron Project

**Client:** CNOOC

**EPC:** OneSubsea

**Project type:** Subsea Structure

**Duration:** 14 Months

**Total Weight:** 350 MT

**Scope of Work:** Fabrication engineering, procurement of painting and structure steel, fabrication supervision, construction of subsea structure, including small bore tubing, provide assistance for FAT, EFAT&SIT

## TBM Project

**Client:** Petrobras

**EPC:** McDermott

**Project type:** Buoyancy Structure

**Duration:** 12 Months

**Total Weight:** 1,000 MT

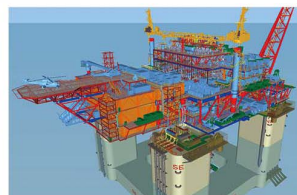
**Scope of Work:** Fabrication engineering, procurement of materials, construction, load-out & transportation

## McDermott Wuchuan Capabilities

Drawing on the unique strengths of its parent companies, QMW delivers high quality onshore and offshore modules, FPSO construction and integration services for clients worldwide. Our capabilities include the following



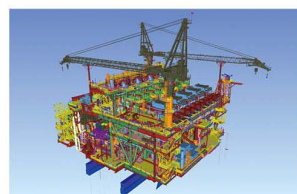
LNG Modules



Offshore Floater



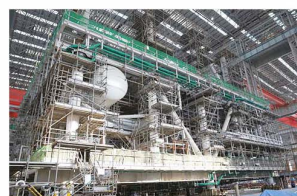
Petrochemical Modules



Integrated Offshore Topside

## SUBModule<sup>SM</sup> Advantages

- Split the complex module to sub-modules to open the work front
- Assemble the sub-modules inside the Mega Module Assembly Shop, 24/7 without being affected by weather condition
- Provide delivery certainty, particularly to fast track projects
- Require early engagement during detailed engineering phase



MEG SUBModule<sup>SM</sup> Fabrication



Yamal SUBModule<sup>SM</sup> Stacking

## Contact

No. 367, Lijiang East Road

Qingdao, Shandong, China

Tel: +86 532 8695 3776

[www.mcdermottwuchuan.com](http://www.mcdermottwuchuan.com)

[businessdevelopment@mcdermottwuchuan.com](mailto:businessdevelopment@mcdermottwuchuan.com)

915 N. Eldridge Parkway

Houston, TX 77079 USA

Tel: +1 281 870 5000

[mcdermott.com](http://mcdermott.com)