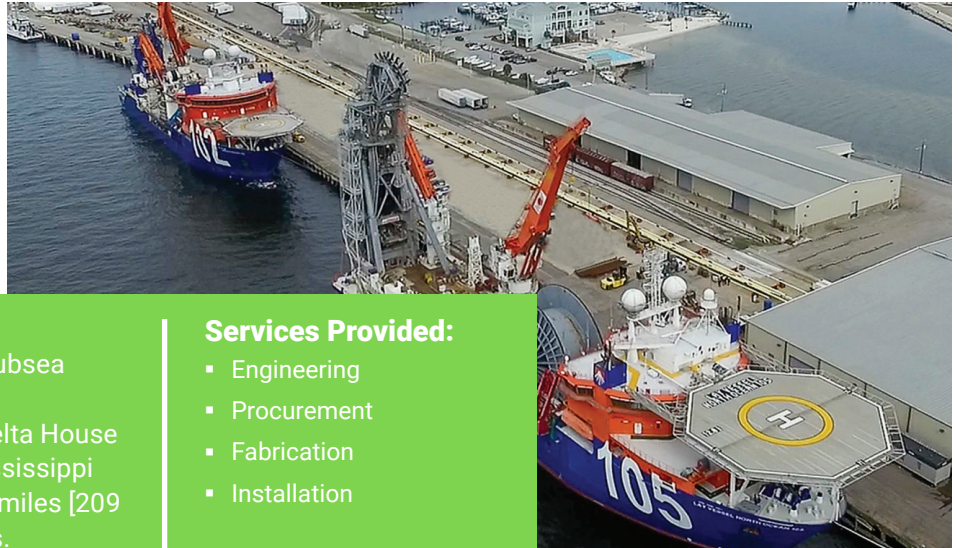


OTIS, LLOG EXPLORATION OFFSHORE



McDermott completed the one-well subsea tieback from the Otis gas discovery in Mississippi Canyon Block 79 to the Delta House floating production unit located in Mississippi Canyon Block 254 approximately 130 miles [209 kilometers] southwest of New Orleans.

Services Provided:

- Engineering
- Procurement
- Fabrication
- Installation

The scope of work included project management, design engineering, procurement, fabrication, load-out, transportation and installation of the following.

- One 7" flowline and steel catenary riser with wet insulation coating measuring approximately 70,000 feet [21,336 meters] in length, including hydrotest
- One pipeline end termination
- One rigid jumper
- Three crossings for the flowline and three crossings for the umbilical

Additionally, McDermott provided project management, transportation and installation of the following free-issued items.

- One umbilical measuring approximately 70,000 feet [21,336 meters] in length and associated flying leads

Project management and engineering were performed in Houston, Texas while the steel catenary riser and flowline were fabricated at McDermott's spoolbase and marine operations facility in Gulfport, Mississippi.

The installation campaign was successfully completed by the Lay Vessel North Ocean 105 in water depths ranging from 3,800 to 4,200 feet [1,158 meters to 1,280 meters].

Facilities

- Subsea tieback to Delta House floating production unit

Location

- Mississippi Canyon, Gulf of Mexico

Pipe Dimensions

- Flowline – 7.625" OD x 0.875" WT
- Steel catenary riser – 7.625" OD x 1.137" WT

Water Depth

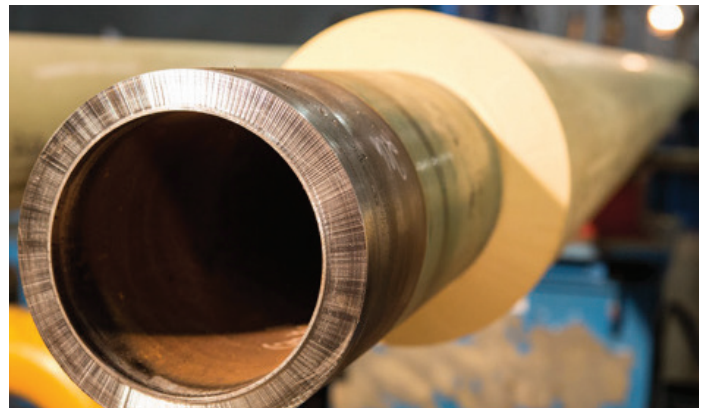
- 3,800 - 4,200 feet [1,158 - 1,280 meters]

Spoolbase

- Gulfport, Mississippi

Vessels

- Lay Vessel North Ocean 105



MCDERMOTT